



ROBERTS COMMUNITIES  
— FULFILLING DREAMS —



Manufactured By:



[www.robertscommunities.com](http://www.robertscommunities.com)

A Family of Premier Manufactured Home Communities



# TWIN VIEW

## *Premium Collection*

1,512 Sq Ft

3 Bedroom

2 Bathroom

Eat-In Island

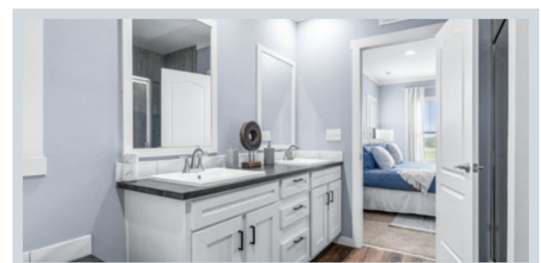
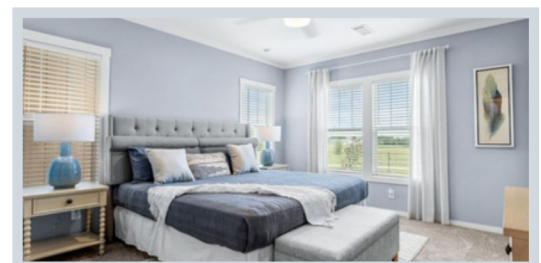
Walk-In  
Closet

Double Sinks  
in Bath

Full Featured Living Awaits



512-354-3791





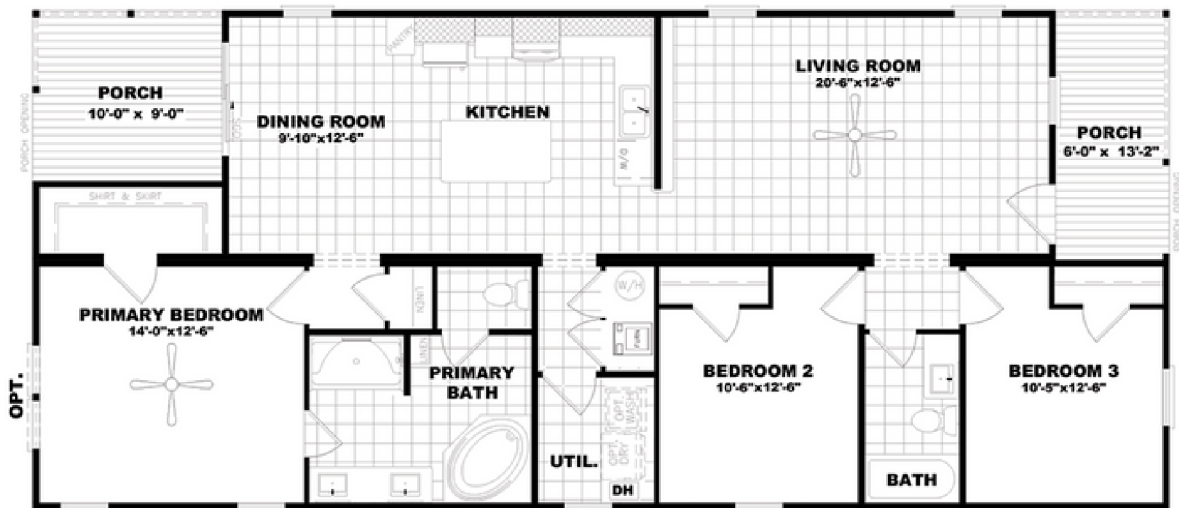
# FEATURES

## Premium Collection

- 8.5' Ceilings
- Overhead Air
- Radiant Barriers
- Stainless Steel Appliances

## eBuilt ENHANCEMENTS

- 25 + Home efficiencies
- LED Lighting
- Hybrid Water Heater
- Smart Comfort By Carrier
- Lower Annual Utility Consumption



Disclaimer: Information provided is for general purposes only and subject to change without notice. Actual features and specifications may vary.



SCAN TO TOUR

### MY HOME DETAILS:

Tour Date: \_\_\_\_\_

Sales Price: \_\_\_\_\_

Sales Person: \_\_\_\_\_

Move-In Date: \_\_\_\_\_

Incentive(s): \_\_\_\_\_

Community Fee: \_\_\_\_\_



ROBERTS COMMUNITIES  
FULFILLING DREAMS